

Yancey Ranch

Yancey's Ranch's sheep program started with three little ewe lambs from Texas for 7-year-old Vallie to show for a few years 'til she was big enough to show cattle. Janeal showed and raised market lambs growing up in Texas way back when and had some success. However, we quickly found out that Momma's knowledge wasn't going to get us very far and we had a lot to learn about showing sheep in 2015. Thanks to lots of advice and help from other breeders we've learned a lot and flock has grown to close to 50 breeding ewes. And although Vallie shows a heifer from time to time, we are still mainly concentrating on sheep.

Our ewe base consists of Hewlett and Kendrick genetics with several other breeders including Doty, Maye, Haws, Droppert, and Massey genetics. We raise a handful of registered Hampshires but mostly club lambs. The highlights of winnings from our breeding program include the famous Puppies; Big Puppy and Vallie were Champion Light Weight division and 9th overall in the State Arkansas Bred Lamb show in 2020, while her twin sister, the Little Puppy, won third overall in the Pee Wee Elite show in Oklahoma for Wyn. In 2021, we raised the Supreme Bred and Owned Ewe and Reserve Supreme Bred and Owned Ram at the Arkansas State Fair and the Grand Champion Lamb at the Marion County Fair, as well as multiple county fair champions and reserves in Arkansas and Texas over the years.

This year, the lamb crop consists of AI lambs out of Top Tier and Strictly Business and natural service lambs out of our Fuzzy Dice Son, Willie, and our Registered Hampshire, Prince Louis. We have a few other sires sprinkled in, as well. We have been blessed with lots of ewe lambs in 2022 and quite a few of those lovely ladies are blue. Several of the lambs are bred just like the Puppies (Prince Louis x Black Label)! Most of the lambs are February and March born, perfect for summer jackpots and fall fairs.

We love helping new showmen get started and I'm always happy to answer questions about feeding, fitting and showmanship. We will open the barn to visitors the week of April 4th. All of our lambs are eligible for the Arkansas Bred Lamb program. Call or Text Janeal at 870-688-4247 to swing by.



BARN OPEN
APRIL 4TH

Yancey Ranch

CLUB LAMBS
REGISTERED HAMPSHIRE

Supreme Bred and Owned Ewe
Ark. State Fair

Reserve Bred and Owned Ram
Ark. State Fair

Grand Champion
Marion County Fair

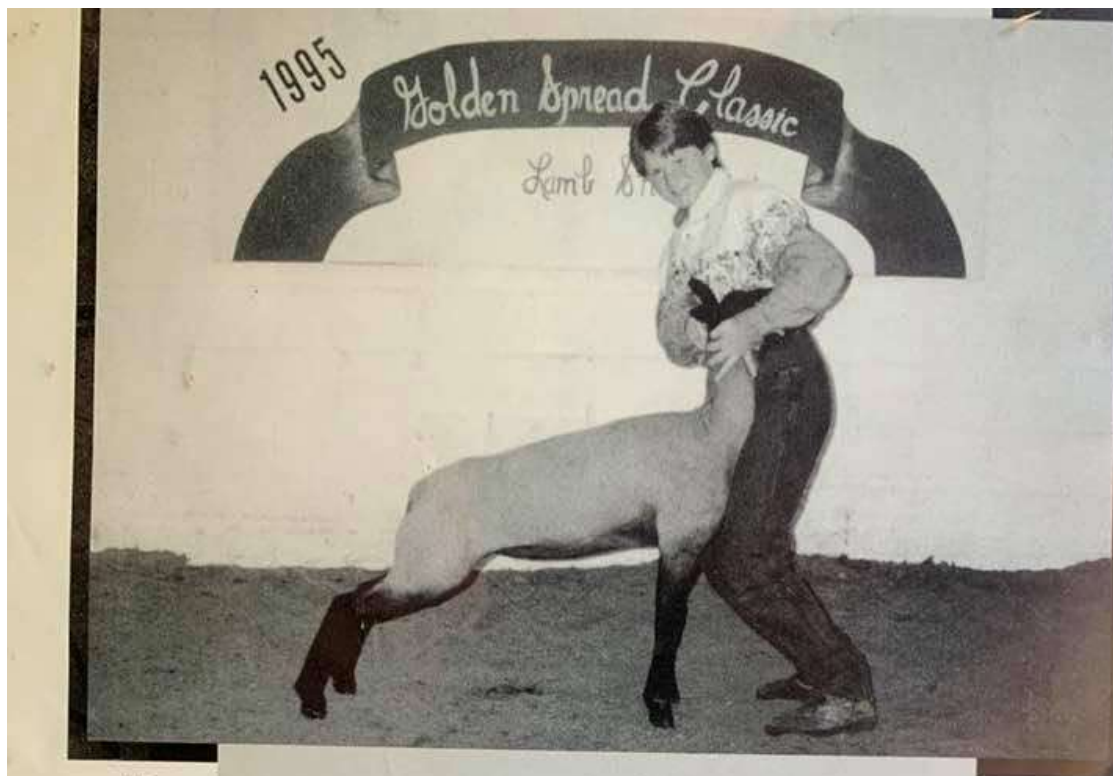
Champion Lightweight Division
Arkansas Bred Lamb Show
Ark. State Fair

Come find your next Champion
Call or message Janeal for an appointment
870-688-4247

Our barn will be open starting April 4. We are only 45 minutes from campus, if you are around for the State FFA contests in April. I'll be in town most weekends in April and May.



Those first three ewes from Charlie Palmer in Texas.



"Here's Lucy

No not Lucille Ball, just Lucy.

But we couldn't be prouder of her if she were a movie star. Lucy is a homeraised ewe lamb out of our ram "Fonzie". The first five times she was shown she placed first in class four times and second once and was named Reserve Breed Champion three times out of the lightweight classes, including at the Belt Buckle Bonanza.

We have late March and April lambs for sale NOW

An old Ad from the Purple Circle magazine in 1995. Sheep are quite a bit different today, but Lucy was definitely a favorite.

PRINCE LOUIS

Son of Royal (Hewlett)



Sire of the 'Puppies'



Big Puppy

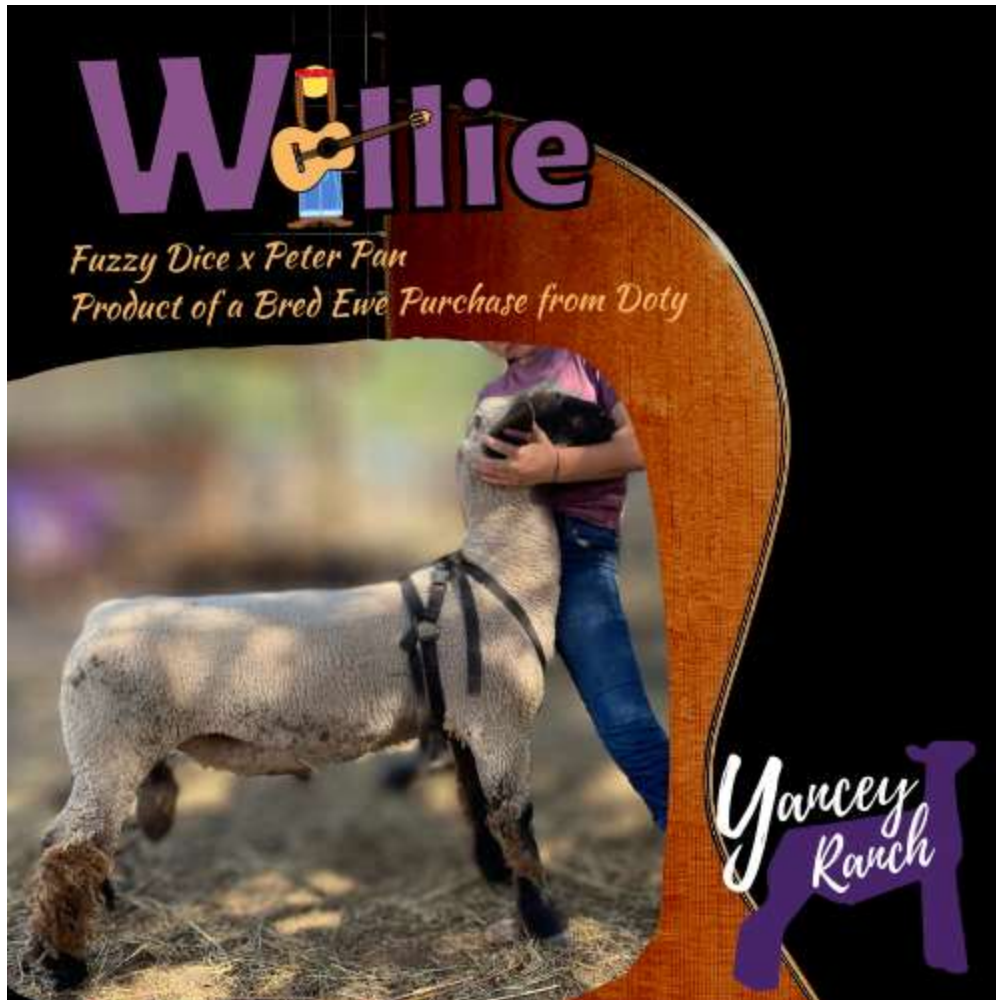
Champion Lightweight Division
State Arkansas Bred Lamb Show
9th Overall ABL Lamb
Class Winner at Multiple Jackpot Shows



Little Puppy

Champion Hampshire
3rd Overall Lamb
Oklahoma Peewee Elite Show

Prince Louis was a bred ewe purchase from Ed Hewlett. He was a Royal son. He gives them that killer look from the side.



Will is our 2021 keeper ram. He's throwing lambs with lots of shag and bone, an upfronted look, and really wedgie. His mother is a Natural ewe, so he has lots of Natural babies.



Raya was a fun one to show in 2021. She won her class several times. She was a Snoopy (Prince Louis son) out of a Road Trip ewe from the University



Hannah Montana is also a Snoopy out of a Maye ewe.